

[CATALOGUE](#) / [BATTERY FOG MACHINES](#) / [BASE-GUARD 24 V WALL MOUNT W/ BATTERY](#)

# BASE-GUARD 24 V WALL MOUNT W/BATTERY

Battery-operated safety fog machine.

The Base-Guard 24V Wall mount is a battery-operated safety fog machine that can be used in rooms up to 200 m<sup>3</sup>. Offices, shops, petrol stations, production rooms, or storage rooms can be protected by the device. Thanks to its unique evaporator technology, the Base-Guard 24V Wall Mount has an extremely low power consumption in standby mode, but is still heated up in under two seconds and produces thick white fog. Active for up to 4 weeks without power. The Base-Guard 24V Wall Mount has an interface card with numerous inputs and outputs so that it can be connected to a wide variety of alarm systems. The integrated battery pack is equipped with lead-gel batteries and provides up to 4.5 minutes of fog duration. The integrated charger charges the battery within six hours. The fluid tank contains 600ml of highly concentrated special fluid, which creates a very dense, harmless mist. The tank is integrated into the device and is sufficient for up to 6 minutes of continuous fog. The fog outlet nozzle can be swiveled and adjusted between 0 and 60°. A PC interface enables parameterization and readout of the internal logbook.

[FEATURES](#)[SPECIFICATIONS](#)[GALLERY](#)[RELATED PRODUCTS](#)

## FEATURES

Active for up to 4 weeks without power

- UNIQUE EVAPORATOR TECHNOLOGY.
- PRODUCES THICK WHITE FOG.
- UP TO 4.5 MINUTES OF FOG DURATION.

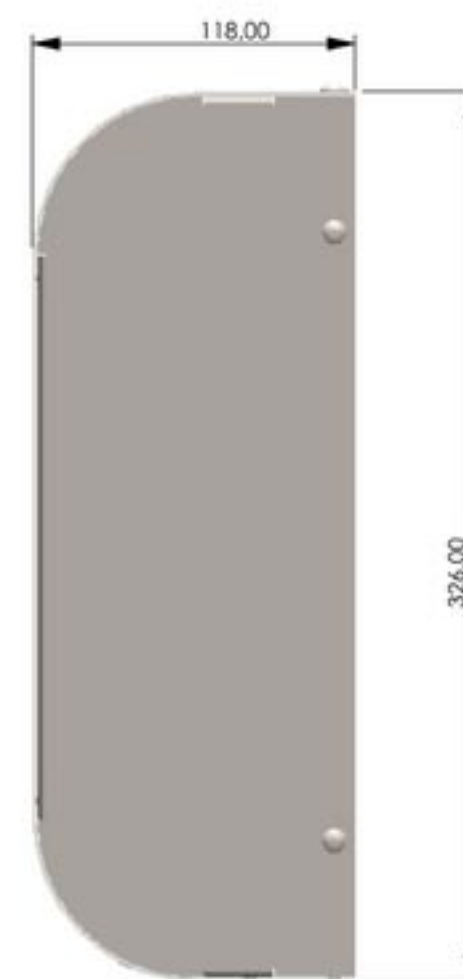
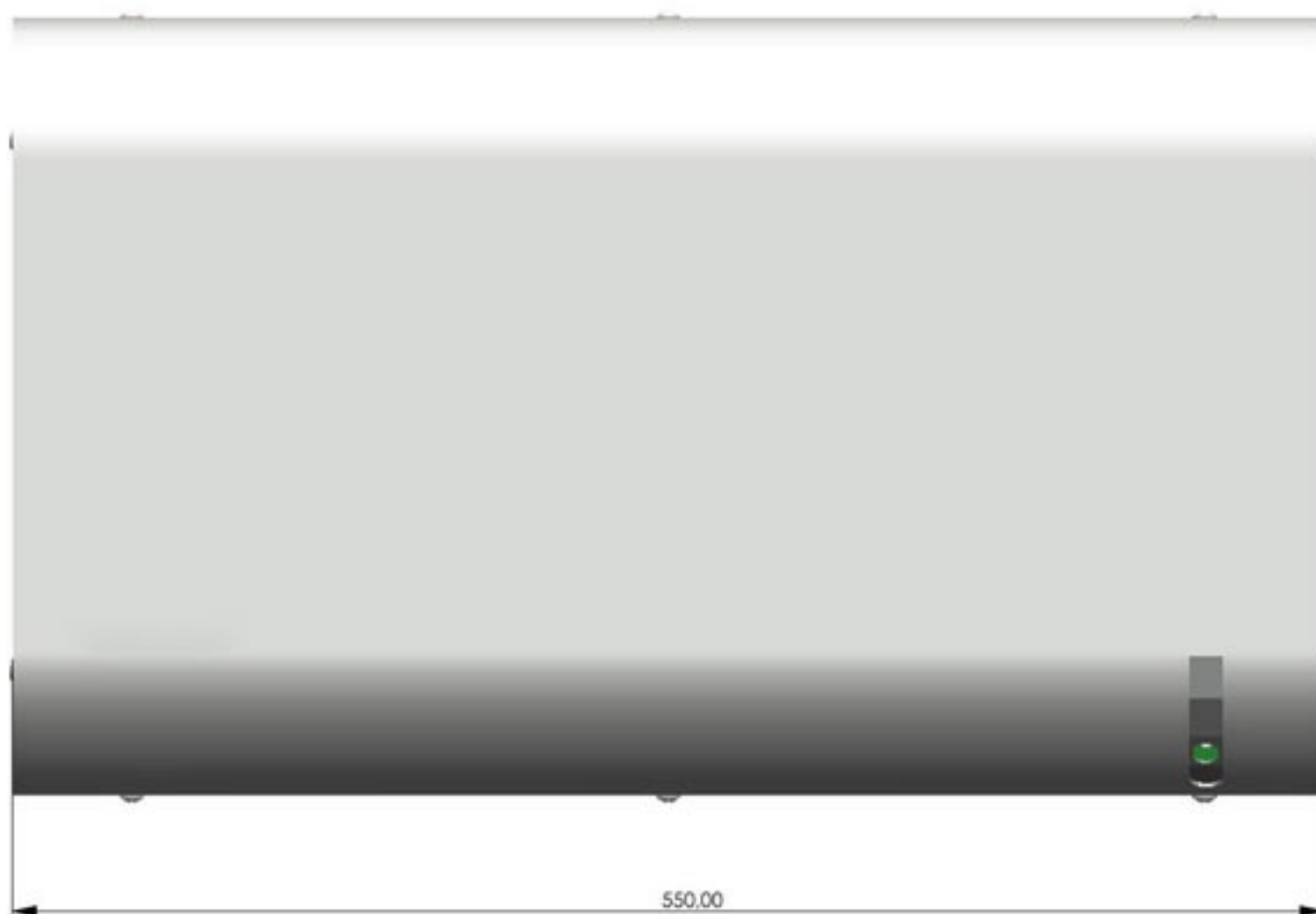
# SPECIFICATIONS

## Evaporator fog machine

Power	3000 watts
Battery pack	Lead-gel battery, 24 V, 22 Ah
Mains connection	90-264 V (47-63 Hz), 120 W.
Standby time without network	4 weeks
Heating time	<2 seconds
Fluid consumption	95 ml/min or 3.2 oz/min
Tank capacity	600 ml or 20.2 oz
Control	Activation, triggering, verification, two triggers, BMA
Outputs	Triggered, sabotage, ready for operation, error (battery monitoring, power failure, no fluid, internal error)
Sensors	Fluid sensor, sabotage, battery monitoring
Programming	PC via USB
Fog time	programmable
Logbook memory	64 temporary entries, 64 permanent entries
Dimensions (L x W x H)	550 x 326 x 118 mm or 21.6 x 12.8 x 4.6 inches
Weight	27 kg or 59.5 lbs

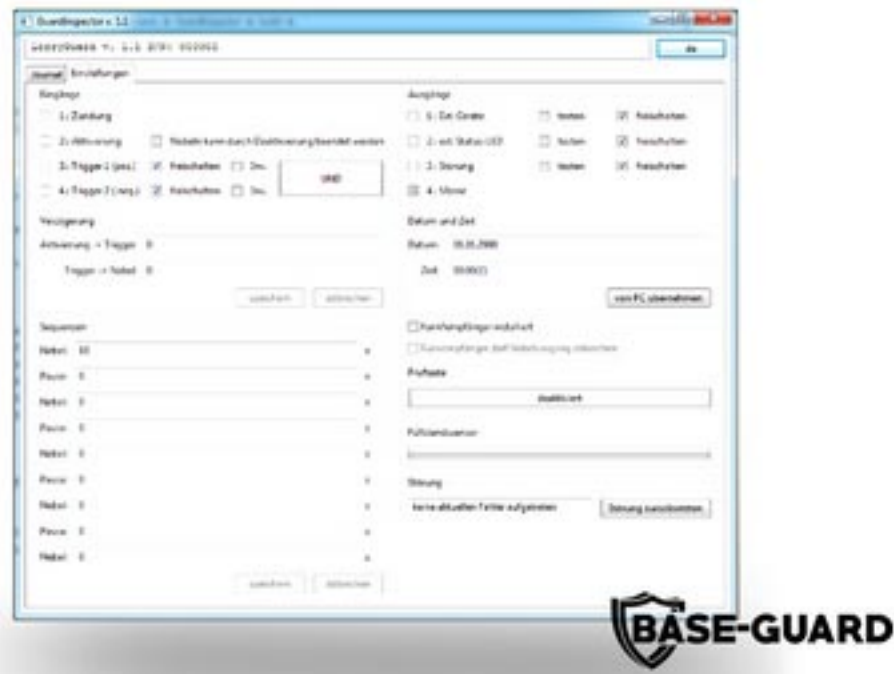
# GALLERY

It can be used in rooms up to 200 m<sup>3</sup>. Offices, shops, petrol stations, production rooms, or storage rooms can be protected by the device.



# RELATED PRODUCTS

Related products, options, and accessories



## GuardInspector

The GuardInspector is an application for Windows to configure the Base-Guard from a PC or Notebook. With this Software, it is possible to test the ins & the outputs and to set the triggering actions. Moreover the internal journal can be read by the GuardInspector.

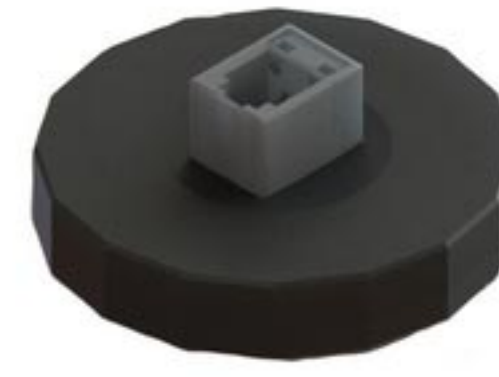
### System requirements

**Operating system:** at least Windows 7 (64-bit)  
**Memory space:** 20 MB.



## Radio Remote Control

**Frequency:** 433,62 MHz  
**Functions:** activate and deactivate  
**Range:** 5 m  
**Battery:** 12 V Alkaline  
**Size (L x W x H):** 65 x 36 x 15 mm



## Tank Lid With Sensor

**Function:** level sensor  
**Principle:** optical  
**Voltage:** 5 V DC (from sensorbus)  
**Interface:** Sensorbus  
**Size (Ø x H):** 51 x 21 mm



## Base-Guard Fluid

**Available sizes:** 600ml for the 24V series or 55ml for the 12V series.